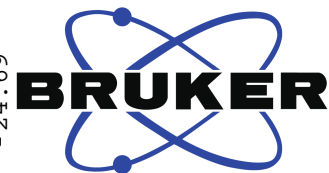


—181.09

—145.73

123.44
 107.27
 105.84
 102.69
 80.47
 79.66
 79.44
 77.30
 76.38
 74.98
 74.88
 73.40
 73.21
 72.22
 70.73
 65.38
 63.48
 56.91
 48.95
 47.58
 47.39
 43.08
 42.90
 40.66
 40.41
 39.79
 37.95
 35.15
 34.20
 34.12
 34.10
 31.87
 30.88
 29.23
 28.98
 27.51
 27.08
 24.69



Current Data Parameters
 NAME BaiTouWengZaoGan D-13C NMR C5D5N
 EXPNO 1
 PROCNO 1

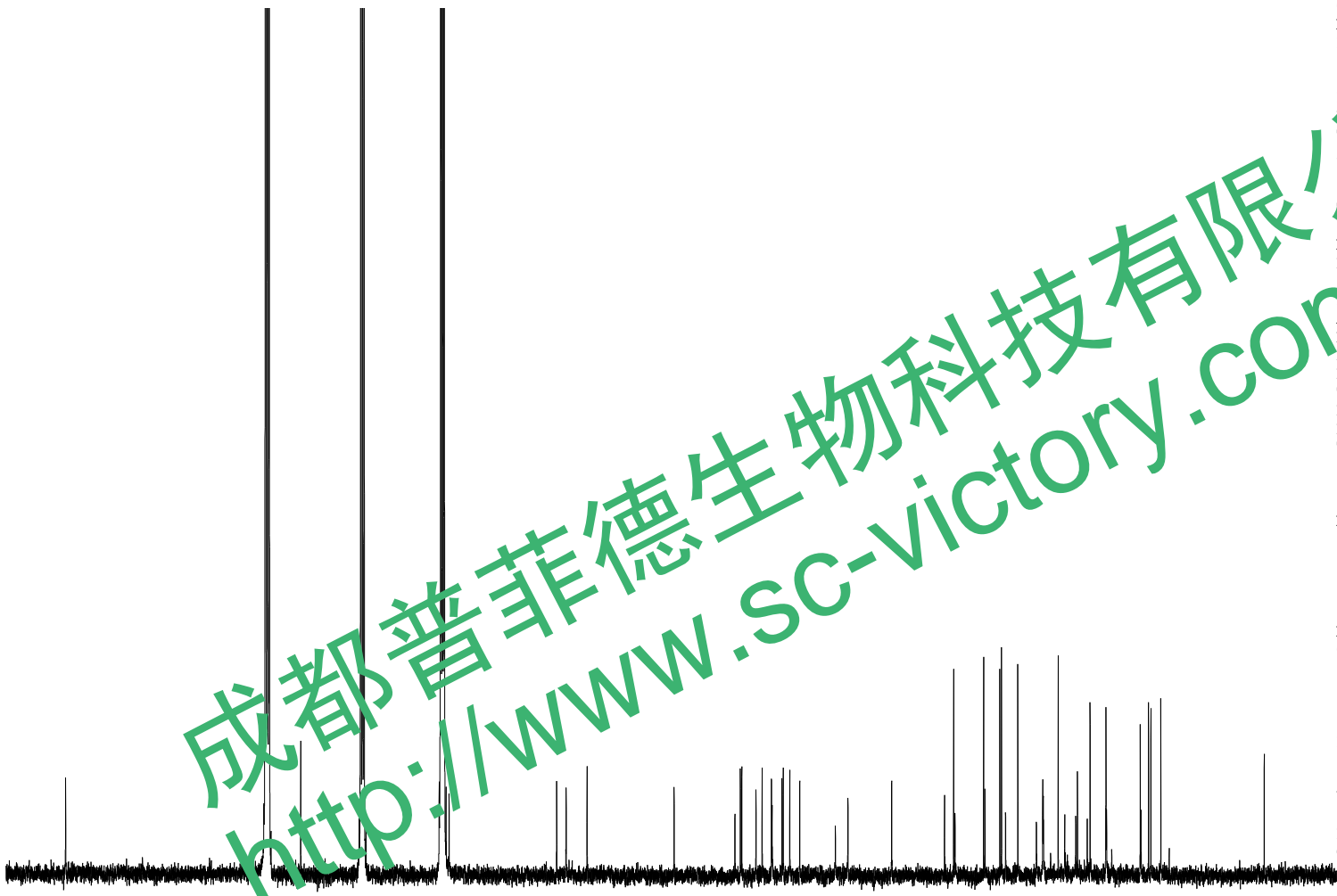
F2 - Acquisition Parameters
 Date_ 20171013
 Time 12.31
 INSTRUM spect
 PROHD 5 mm PABBO BB/
 PULPROG zgig30
 65536
 SOLVENT Pyr
 NS 2896
 DS 4
 SWH 24038.461 Hz
 FIDRES 0.366798 Hz
 A 1.3631488 sec
 RG 202.5
 DW 20.800 usec
 DE 6.50 usec
 TE 301.1 K
 D1 2.00000000 sec
 D11 0.03000000 sec
 TD0 1

==== CHANNEL f1 =====
 SFO1 100.6228298 MHz
 NUC1 13C
 P1 10.13 usec
 PLW1 51.00000000 W

==== CHANNEL f2 =====
 SFO2 400.1316005 MHz
 NUC2 1H
 CPDPRG[2] waltz16
 PCPD2 90.00 usec
 PLW2 11.50800037 W
 PLW12 0.31077999 W

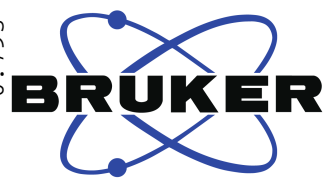
F2 - Processing parameters
 SI 262144
 SF 100.6126537 MHz
 WDW EM
 SSB 0
 LB 1.00 Hz
 GB 0
 PC 1.40
 SR -115.27 Hz

成都普菲德生物科技有限公司
<http://www.SC-victory.com>



180 160 140 120 80 60 40 20 ppm

6.155
5.480
5.143
5.123
4.792
4.777
4.725
4.720
4.620
4.613
4.603
4.598
4.589
4.521
4.513
4.505
4.489
4.393
4.380
4.319
4.296
4.285
4.273
4.265
4.242
4.219
4.211
4.189
4.031
2.148
2.051
1.929
1.922
1.908
1.902
1.851
1.818
1.651
1.636
1.496
1.468
1.437
1.306
1.240
1.188
1.101
1.021
0.999
0.968
0.926
0.920
0.852
0.793

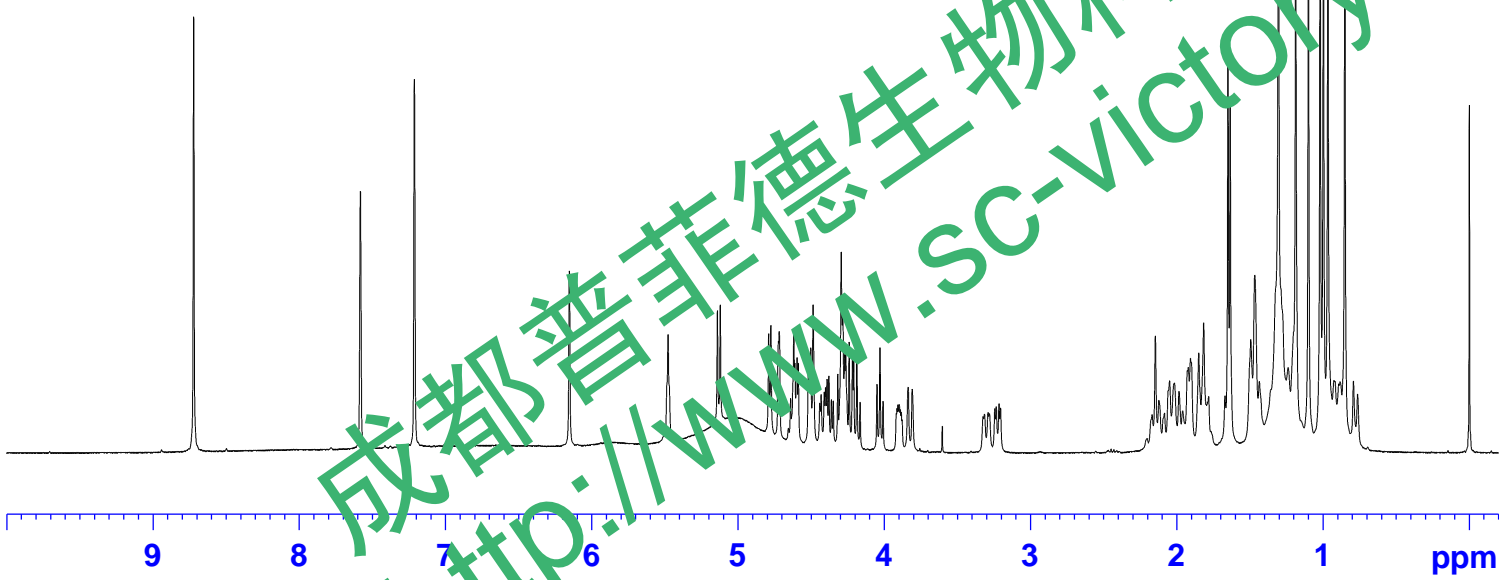


Current Data Parameters
 NAME BaTouWengZaoGan D-1H NMR C5D5N
 EXPNO 1
 PROCNO 1

F2 - Acquisition Parameters
 Date_ 20171013
 Time 11.03
 INSTRUM spect
 PROBP1 5 mm PABBO BB/
 PULPROG zg30
 TD 65536
 SOLVENT Pyr
 NS 16
 DS 2
 SFO1 8012.820 Hz
 FIDRES 0.122266 Hz
 AQ 4.0894465 sec
 RG 57.2
 DW 62.400 usec
 DE 6.50 usec
 TE 301.2 K
 D1 1.0000000 sec
 TD0 1

===== CHANNEL f1 =====
 SFO1 400.1324710 MHz
 NUC1 1H
 P1 14.79 usec
 PLW1 11.50800037 W

F2 - Processing parameters
 SI 262144
 SF 400.1299918 MHz
 WDW EM
 SSB 0
 LB 0.30 Hz
 GB 0
 PC 1.00
 SR -8.17 Hz



1.39
1.63
2.47
1.49
1.44
2.60
2.30
2.37
5.46
1.13
1.07
1.09
0.10
1.00
1.03
10.86
4.64
4.94
15.93
3.44
10.16
5.39
1.40