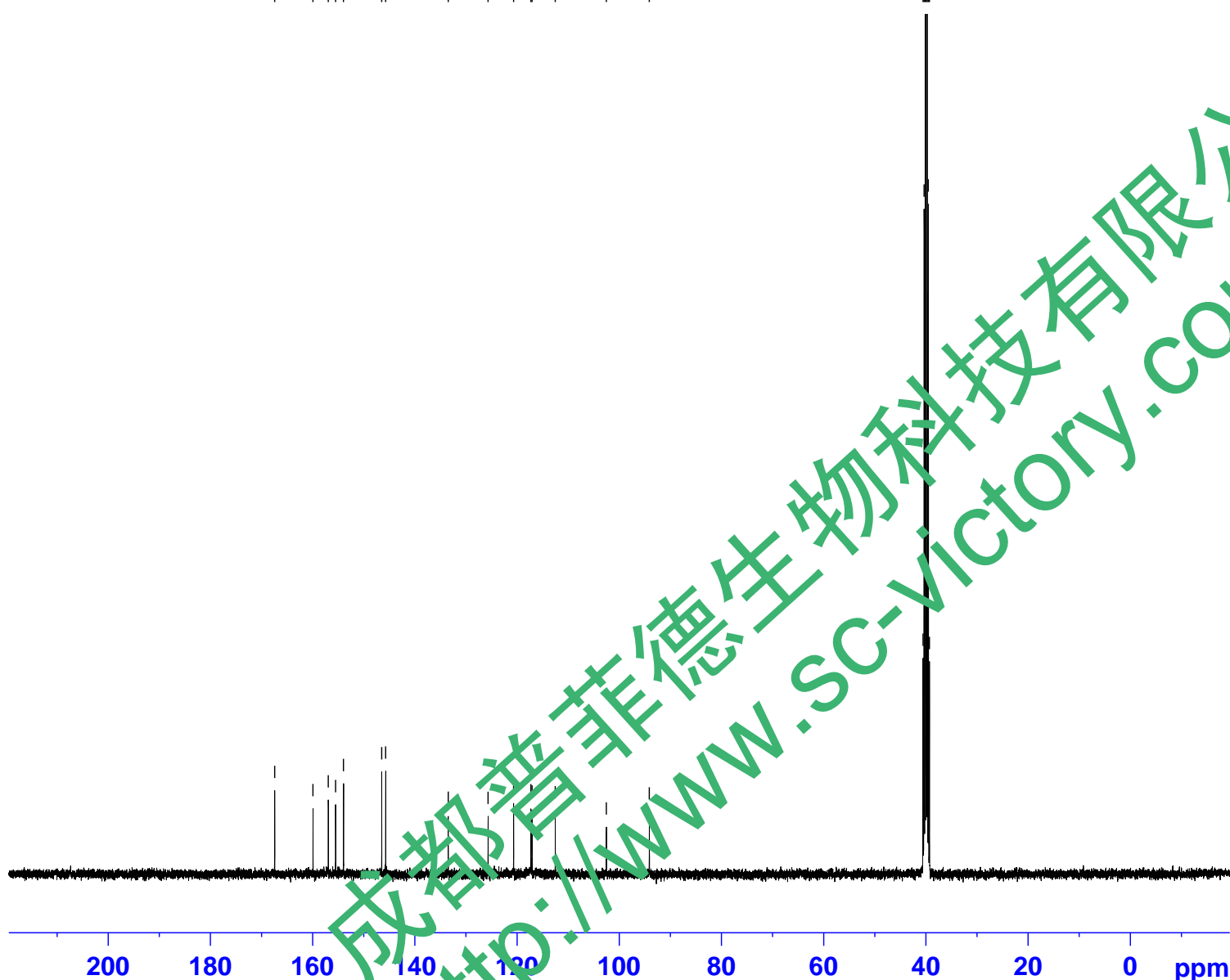


GLP33



167.44  
159.94  
156.95  
155.51  
153.97  
146.50  
145.71  
133.48  
125.68  
120.69  
117.31  
117.06  
112.53  
102.53  
94.12

40.57  
40.36  
40.15  
39.94  
39.73  
39.52  
39.31



Current Data Parameters  
NAME GLP33  
EXPNO 11  
PROCNO 1

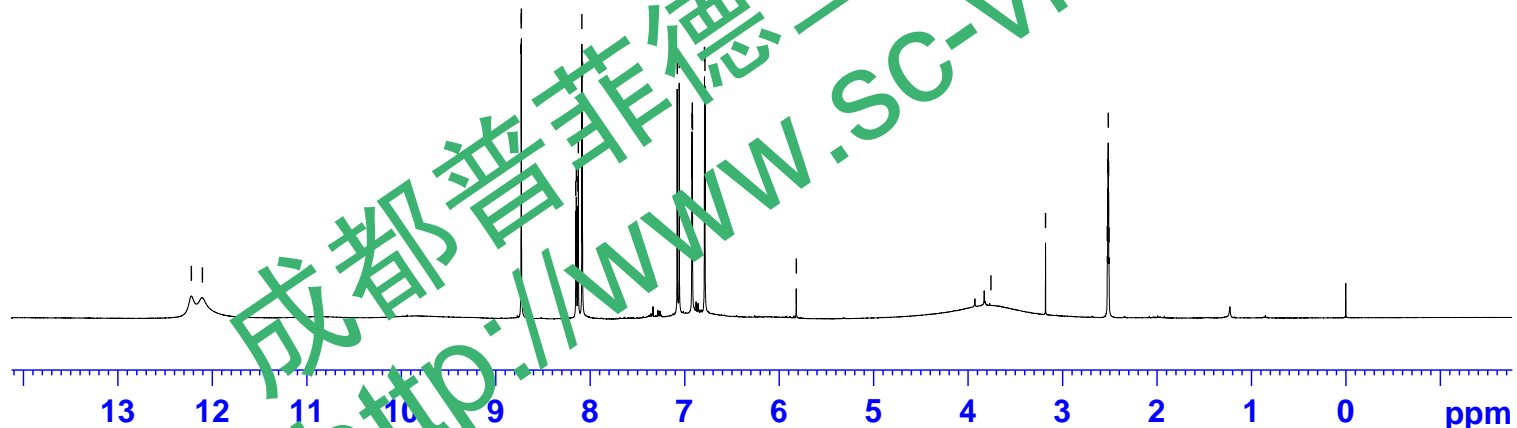
F2 - Acquisition Parameters  
Date\_ 20200926  
Time 12.13 h  
INSTRUM spect  
PROBHD z116098\_0564 (  
PULPROG zgpg30  
TD 65536  
SOLVENT DMSO  
NS 500  
DS 4  
SWH 24038.461 Hz  
FIDRES 0.733596 Hz  
AQ 1.3631488 sec  
RG 198.68  
DW 20.800 usec  
DE 6.50 usec  
TE 300.0 K  
D1 2.00000000 sec  
D11 0.03000000 sec  
TD0 1  
SFO1 100.6228298 MHz  
NUC1 13C  
P1 10.53 usec  
PLW1 69.16899872 W  
SFO2 400.1316005 MHz  
NUC2 1H  
CPDPRG[2] waltz16  
PCPD2 90.00 usec  
PLW2 14.56099987 W  
PLW12 0.17406000 W  
PLW13 0.08755000 W

F2 - Processing parameters  
SI 32768  
SF 100.6127685 MHz  
WDW EM  
SSB 0  
LB 1.00 Hz  
GB 0  
PC 1.40



12.221  
12.104

8.729 8.727 8.151 8.145 8.130 8.124 8.087 8.081 7.078 7.056 6.923 6.921 6.918 6.916 6.789 6.784 5.817  
3.757 3.178 2.524 2.520 2.515 2.511 2.506



2.084

0.979 1.000 1.064 1.020 1.057 1.091

Current Data Parameters  
NAME GLP33  
EXPNO 10  
PROCNO 1

F2 - Acquisition Parameters  
Date\_ 20200926  
Time 11.44 h  
INSTRUM spect  
PROBHD z116098\_0564 (  
PULPROG zg30  
TD 65536  
SOLVENT DMSO  
NS 16  
DS 2  
SWH 8012.820 Hz  
FIDRES 0.244532 Hz  
AQ 4.0894465 sec  
RG 70.67  
DW 62.400 usec  
DE 6.50 usec  
TE 300.0 K  
D1 1.00000000 sec  
TD0 1  
SFO1 400.1324708 MHz  
NUC1 1H  
P1 9.84 usec  
PLW1 14.56099987 W

F2 - Processing parameters  
SI 65536  
SF 400.1299971 MHz  
WDW EM  
SSB 0  
LB 0.30 Hz  
GB 0  
PC 1.00