

— 10.103

8.846
8.841
8.823
8.818
8.321
8.310
8.298
8.274
7.777

— 6.352

— 5.002

4.184
4.119



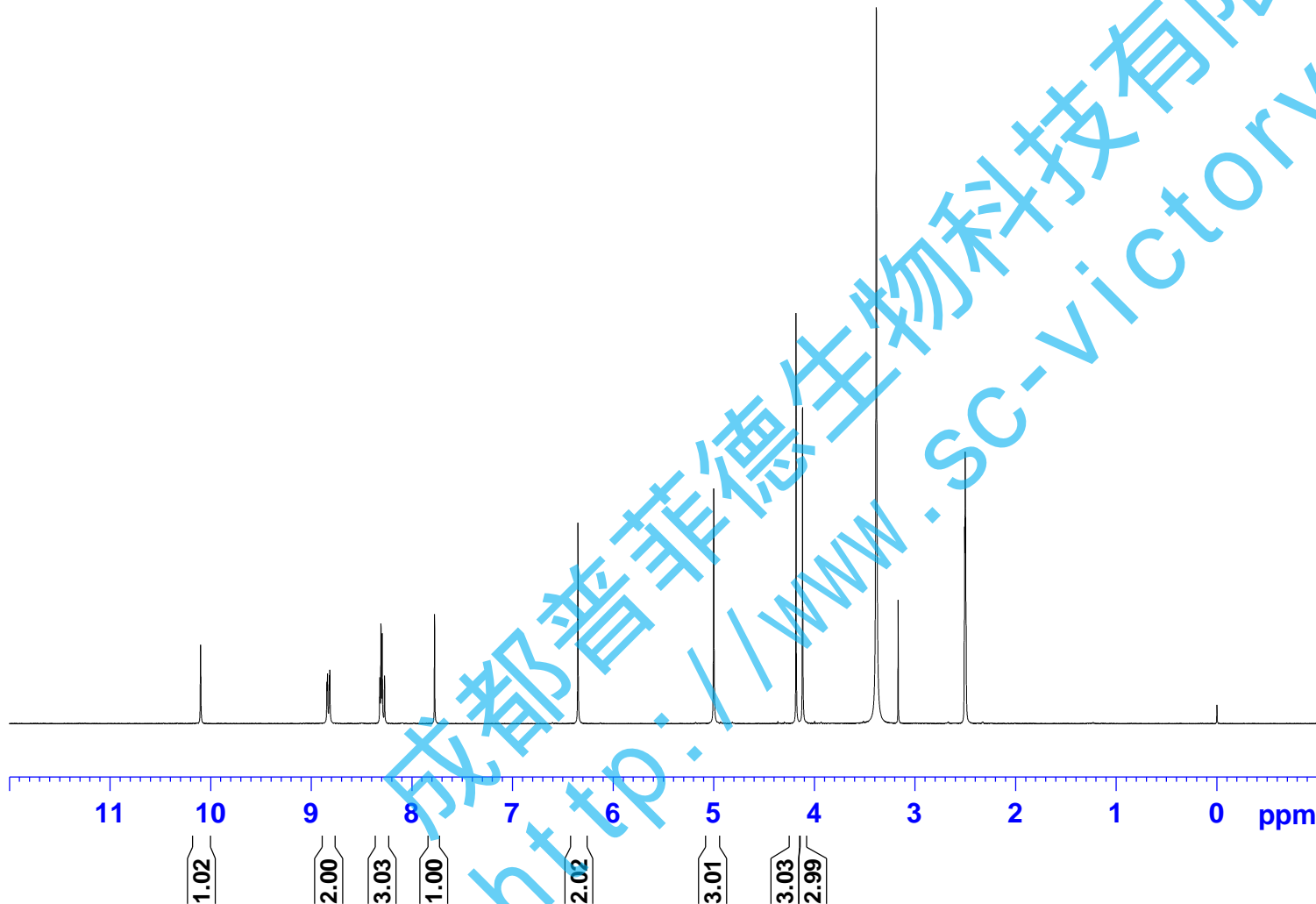
Current Data Parameters
NAME YanSuanBaiQuCaiHongJian-1H NMR DMSO
EXPNO 1
PROCNO 1

F2 - Acquisition Parameters

INSTRUM spect
PROBHD 5 mm PABBO BB/
PULPROG zg30
TD 65536
SOLVENT DMSO
NS 16
DS 2
SWH 8012.820 Hz
FIDRES 0.122266 Hz
AQ 4.0894465 sec
RG 202.5
DW 62.400 usec
DE 6.50 usec
TE 301.1 K
D1 2.0000000 sec
TD0 1

==== CHANNEL f1 =====
SF01 400.1324710 MHz
NUC1 1H
P1 14.79 usec
PLW1 11.50800037 W

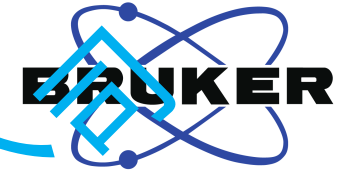
F2 - Processing parameters
SI 262144
SF 400.1300024 MHz
WDW EM
SSB 0
LB 0.30 Hz
GB 0
PC 1.00
SR 2.35 Hz



成都普菲德生物科技有限公司
http://www.sc-victory.com

151.28
151.08
149.27
149.18
145.95
132.78
132.19
131.56
128.55
126.65
125.78
120.64
119.84
119.74
119.24
106.29
104.77
103.24

62.71
57.54
52.73
49.06



Current Data Parameters
NAME YanSun BaiQuCaiHongJian-13C NMR DMSO
EXPNO 1
PROCNO 1

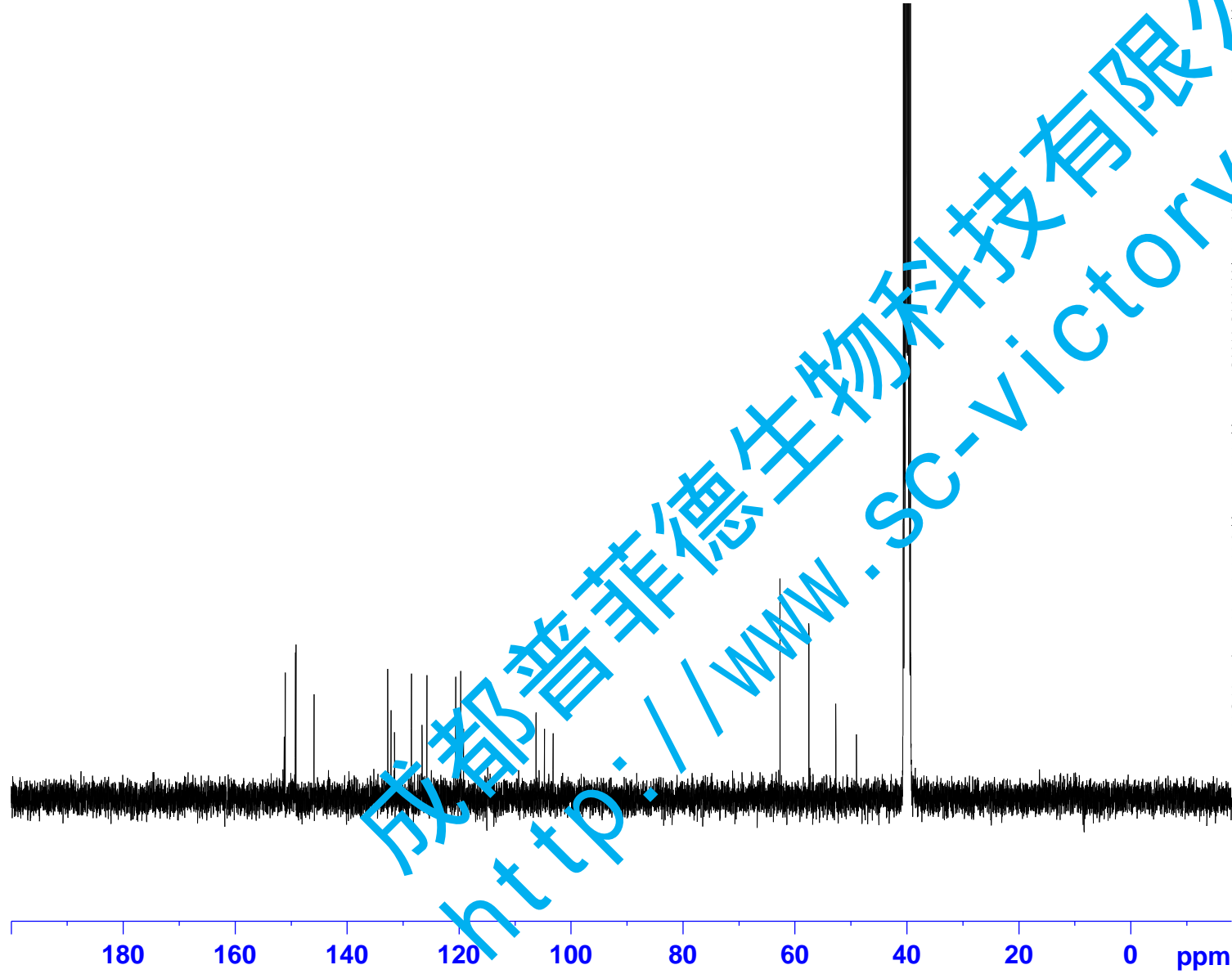
F2 - Acquisition Parameters

INSTRUM spect
PROBHD 5 mm PABBO BB/
PULPROG zgig30
TD 65536
SOLVENT DMSO
AQ 4096
DS 4
SWH 24038.461 Hz
FIDRES 0.366798 Hz
AQ 1.3631488 sec
RG 202.5
DW 20.800 usec
DE 6.50 usec
TE 301.1 K
D1 2.00000000 sec
D11 0.03000000 sec
TD0 1

==== CHANNEL f1 =====
SFO1 100.6228298 MHz
NUC1 13C
P1 10.13 usec
PLW1 51.00000000 W

==== CHANNEL f2 =====
SFO2 400.1316005 MHz
NUC2 1H
CPDPRG[2] waltz16
PCPD2 90.00 usec
PLW2 11.50800037 W
PLW12 0.31077999 W

F2 - Processing parameters
SI 262144
SF 100.6127690 MHz
WDW EM
SSB 0
LB 1.00 Hz
GB 0
PC 1.40
SR 0 Hz



成都普菲德生物科技有限公司
http://www.sc-victory.com