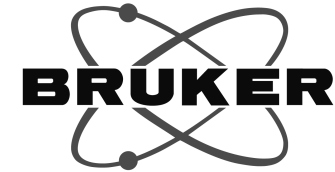


—13.294
—10.727
—10.092
—7.773
—7.181
—3.871
—3.837
—2.304



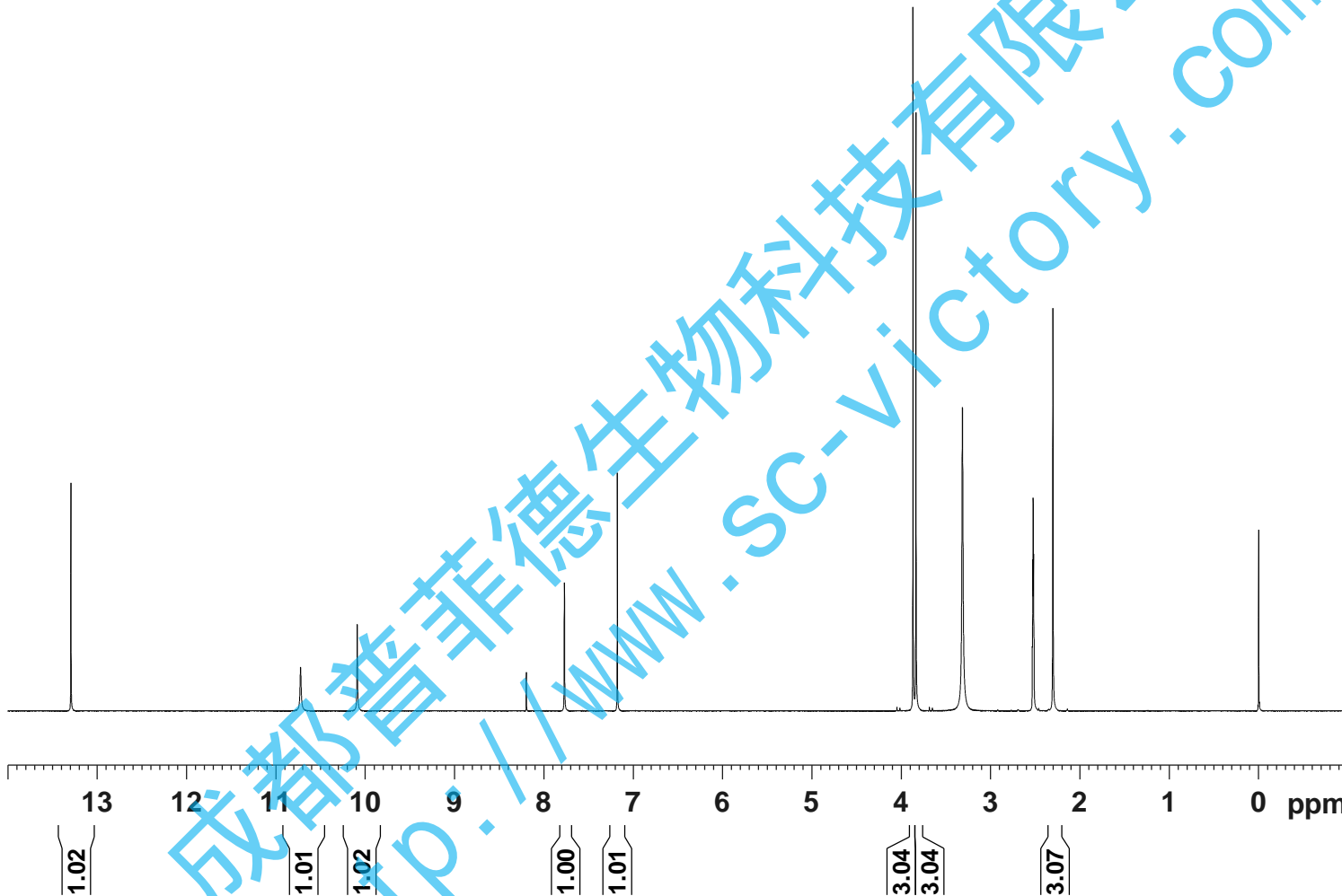
Current Data Parameters
NAME ChengHuangJueMingSu-1H NMR DMSO
EXPNO 1
PROCNO 1

F2 - Acquisition Parameters

INSTRUM spect
PROBHD 5 mm PABBO BB/
PULPROG zg30
TD 65536
SOLVENT DMSO
NS 16
DS 2
SWH 8012.820 Hz
FIDRES 0.122266 Hz
AQ 4.0894465 sec
RG 202.5
DW 62.400 usec
DE 6.50 usec
TE 301.2 K
D1 1.00000000 sec
TD0 1

==== CHANNEL f1 =====
SFO1 400.1324710 MHz
NUC1 1H
P1 14.79 usec
PLW1 11.50800037 W

F2 - Processing parameters
SI 65536
SF 400.1299943 MHz
WDW EM
SSB 0
LB 0.30 Hz
GB 0
PC 1.00
SR -5.70 Hz



成都普菲德生物科技有限公司
http://www.sc-victory.com

— 187.25
— 180.41
— 157.07
— 156.59
— 155.48
— 147.18
— 139.38
— 131.89
— 128.57
— 125.89
— 124.98
— 123.70
— 111.13
— 107.79

— 61.14
— 59.96

— 16.50



Current Data Parameters
NAME ChengJiangJueMingSu-13C NMR DMSO
EXPNO 1
PROCNO 1

F2 - Acquisition Parameters

INSTRUM spect
PROBHD 5 mm PABBO BE/
PULPROG zgig30
TD 65536
SOLVENT DMSO
NS 688
DS 4
SWH 24038.461 Hz
FIDRES 0.366798 Hz
AQ 1.3631488 sec
RG 202.5
DW 20.800 usec
DE 6.50 usec
TE 301.2 K
D1 2.00000000 sec
D11 0.03000000 sec
TD0 1

==== CHANNEL f1 =====
SFO1 100.6228298 MHz
NUC1 13C
P1 10.13 usec
PLW1 51.00000000 W

==== CHANNEL f2 =====
SFO2 400.1316005 MHz
NUC2 1H
CPDPRG[2] waltz16
PCPD2 90.00 usec
PLW2 11.50800037 W
PLW12 0.31077999 W

F2 - Processing parameters
SI 262144
SF 100.6128124 MHz
WDW EM
SSB 0
LB 1.00 Hz
GB 0
PC 1.40
SR 43.36 Hz

